

## HOW TO FIND YOUR **DATE CODE**

A date code is the year of manufacture followed by the week. It is an **8** digit code. Comprised of a **4** digit number followed by a **2** digit number, then another **2** digit number (which is sometimes alpha-numeric). This is an example of a valid date code - **2017-22-59**.

### CORDLESS TOOLS

The date code will usually be printed into the battery compartment.

Please see examples below -



### MITRE SAWS

The date code can be printed in the following places:

- Underneath the arm
- Underside of motor housing
- Underneath the handle
- If cordless, it should be in the battery compartment
- Rear of the main motor housing

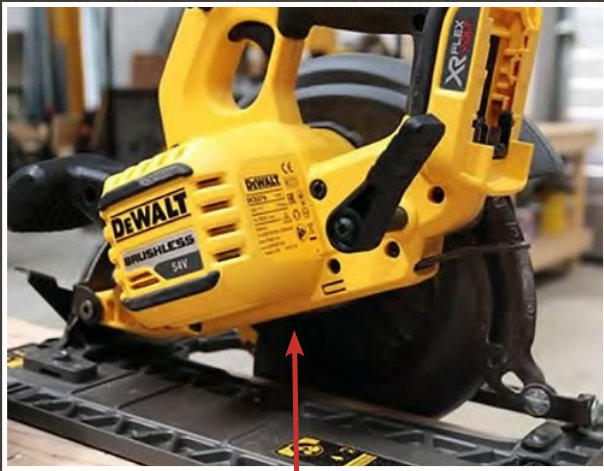
(On some models, for example DWS773 and DWS774, the date code is imprinted as a series of dots and side on so you will need to tilt your head to the right and be in good light to see it).



## CIRCULAR SAWS

The date code will usually be printed into the underside of the main body. You will need to drop the base in order to see the date code.

Please see example below -



## SANDERS

The date code will usually be printed on the side of the sander into the plastic housing.

Please see examples below -



## TABLE SAWS

The date code will usually be printed on the bottom of the rating plate sticker.

Please see example below -



## ROUTERS & PLANERS

The date code will usually be printed on the side of the sander into the plastic housing.

Please see examples below -





## GRINDERS

To find the date code, rotate the guard through 180 degrees. The date code will then be visible on the underside of the main body.

Please see example below -



## RADIOS

The date code will usually be visible on the battery compartment sticker.

Please see examples below -



## LANDSCAPING EQUIPMENT

### BLOWERS

The date code will usually be printed on the plastic housing underneath the handle.



### STRING TRIMMERS

The date code will usually be printed into the plastic housing.



### HEDGE TRIMMERS

The date code will usually be printed into the side of the plastic housing as shown below.



### CHAINSAWS

The date code will usually be printed into the side of the plastic housing as shown below.

